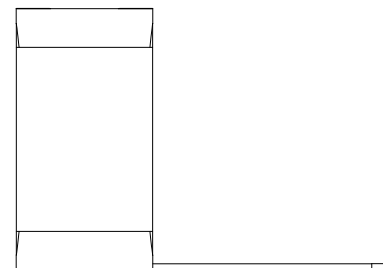
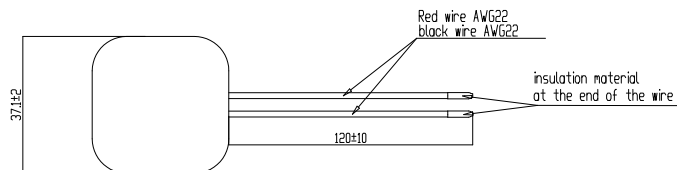
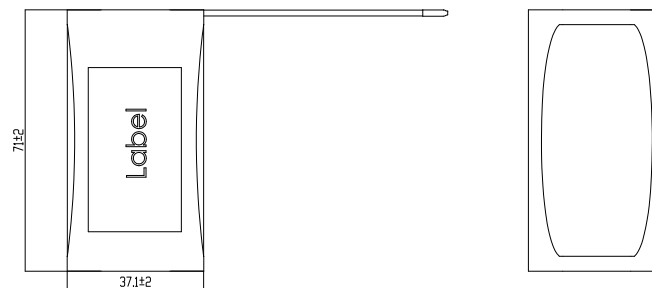
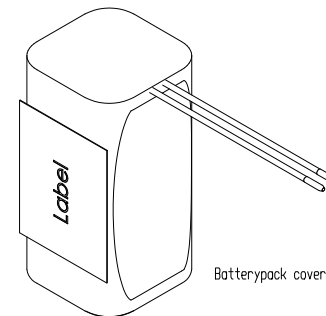


The supplier acknowledges that, with the acceptance of the drawing, he is in a position to manufacture the illustrated part in accordance with the drawing's requirements. The supplier is not responsible for any damage caused by the use of the drawing. The manufacturer shall be held responsible for any damage caused by the use of the drawing.

This drawing may not be used, reproduced or made available in any form without the written or prior written approval.

Technische Daten/ technical data	:	Akkupack/ batterypack
Chemie/ chemistry	:	Lithium Ion
Zellenzahl/ no. of cells	:	4 Zellen/ cells ; 2S2P
Zellentyp/ cell type	:	INR18650 LGC MJ1
Kapazität/ capacity	:	nom. 7000mAh discharge at 0.2C min. 6700mAh discharge at 0.2C to 20°C; EV(Discharge End Voltage): 2.5V per cell
Innenwiderstand/ impedance	:	< 120mOhm (battery and safetyboard)
Nominalspannung/ nominal voltage	:	7.27V
Standard Ladespannung/ standard charge voltage	:	8.4V±1%
Standard Entladespannung/ standard discharge voltage	:	5.0V
Nominaler Ladestrom/ nominal charge current	:	0.5C
Maximaler Ladestrom/ maximum charge current	:	5000mA (limited by safetyboard)
Ladeendstrom/ charge end current	:	0.01C recommended
Maximaler Entladestrom/ maximum discharge current	:	5000mA (limited by safetyboard)
Anwendungstemperaturbereich/ ambient temperature range	:	0°C...+45°C charge -20°C...+60°C discharge -20°C...+30°C storage max. 1 year -20°C...+45°C storage max. 3months
Selbstentladung/ self discharge	:	≤ 5% / month at 20°C ≤ 10% / month at 30°C ≤ 20% / month at 40°C
Standards/ standards	:	UN 3480, Subsection 38.3 All cells and batterypacks type tested according to UN manual of test and criteria subsection 38.3

Technische Daten/ technical data	:	Sicherheitsschaltung/ safety board (0180-3029)
Überladeschutzspannung/ over charge voltage detection	:	4.3V±25mV per cell
Wiedereinschaltspannung/ over charge release voltage	:	4.1V±50mV per cell
Entladeabschaltspannung/ over discharge detection voltage	:	2.4V±50mV per cell
Wiedereinschaltspannung/ over discharge release voltage	:	3.0V±100mV per cell
Nominaler Lade/Entladestrom/ nominal operating current	:	5A
Entlade Abschaltstrom/ discharge cut off current	:	13A± 3A
Kurzschlusschutz/ short circuit protection	:	gegen äußeren Kurzschluss/ against external short circuit
Temperaturschalter/ temperature switch	:	PTC : JK-P730 20V/7.3A at 25°C; 6.2A at 40°C
MOSFET	:	in Masse in Gnd
Rückstellkriterium/ release condition	:	Last trennen, Aktiv nach Anladen/ cut load, release after charging up
Leiterplattenmaterial/ pcb material	:	FR4
Nettogewicht/ net weight	:	196g
Standards	:	CE



Part Number	SAP Description
2447-3049-20	Li-Ion-7.27V-7000mAh-2S2P-Block-PTC/LG
2447-3049-220	Li-Ion-7.3V-7000mAh-2S2P-block-PTC/UK

Application range for inquiry		Allowable deviation general tolerances	Tolerance principle:	Model:	Material:
		DIN ISO 2768-m	ISO 8015	Scale (DN A2):	All dimensions in mm
		2016	Date	1:1	Weight:
		12.10.	Name		
		JX	Drawing name		
		Approved by	Li-Ion-7.27V-7000mAh-2S2P-block-PTC/LG with safetyboard		
V3	part number overview added	15.04.19	DS		
V2	cable length changed	16.01.18	DS		
V1	change request DE-17-0071	14.11.17	DS		
V0	created this D/S	12.10.16	JX		
Version	Change	Date	Name	Project: IS-206-0063	
				Replaced by:	Replacement through:
				Drawing number	Sheet
				Part number	1/1
				2447-3049-XXX	

